



**CFO AND VICE PRESIDENT FOR BUSINESS AFFAIRS**  
**Opportunity Profile**

Assisted by:  
Bruce Dingman  
Dr. Rich Kidd



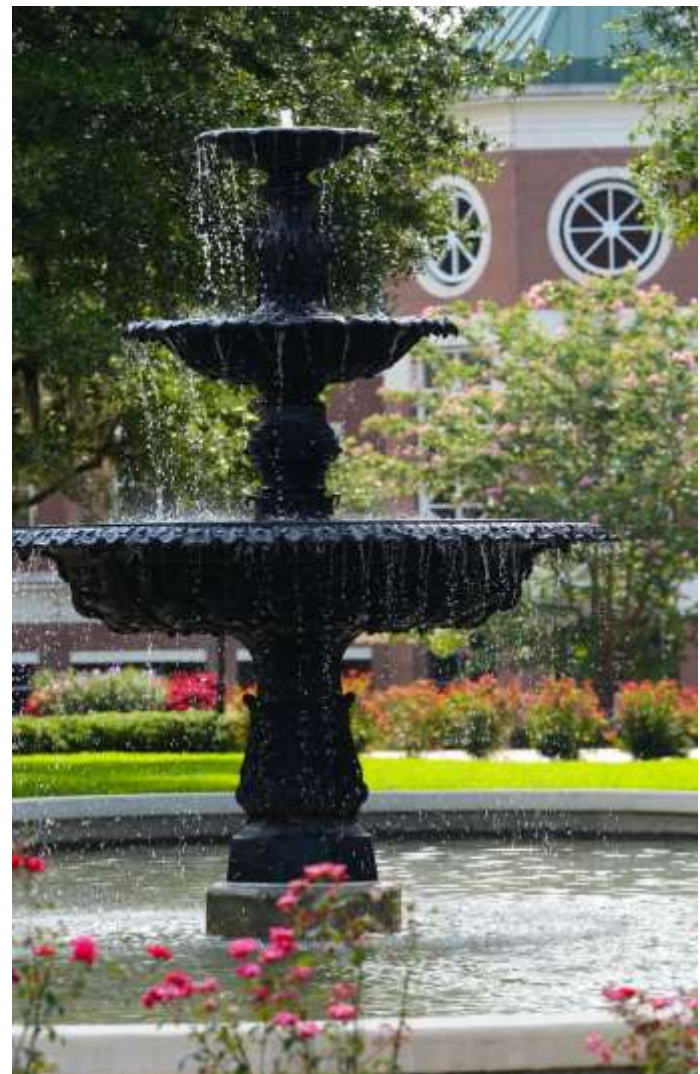
*Belhaven University is a grace-centered Christian University in the heart of Southern Hospitality.*

## OVERVIEW

*Why this is a great opportunity?*

- *A broadly evangelical school that's affiliated with a denomination.*
- *A solid financial situation; has had steady progress for two decades.*
- *Position open due to the retirement of a long-term CFO, as well as Controller (allows opportunity for CFO to hire Controller).*
- *A long-term serving President with an exceptional leadership style, who expects to serve Belhaven for another 10-15 years.*
- *The University has been innovative in developing programs and delivery methods to serve traditional, adult, online, masters and doctoral students.*
- *The Jackson campus has 1,200 traditional students (600 in residence and 600 commuting) which make a "family" feel possible – facilities are high quality and differed maintance is low.*
- *Low turnover in administration, faculty and staff.*
- *Jackson, MS is a great place to live...large enough to have many advantages of a large city and a moderate cost of living.*
- *A leadership culture marked by fairly quick decision-making, few committees, limited bureaucracy, and much flexibility.*

"Our Standard is Christ" is the identifier of Belhaven University because as an institution they are committed to honoring the Lord in all they do. Located in Jackson, Mississippi, they are one of America's most innovative and fastest growing private schools, serving 5,000 undergraduate and graduate students. This includes the 1,200 traditional students in Jackson, as well as providing undergraduate and graduate education for adults in Mississippi and on campuses in Memphis, Atlanta, Chattanooga, and Houston. The seven branch campuses of Belhaven University serve over 2,400 adult and graduate students. Their geographic reach includes major population centers totaling over sixteen million people, unprecedented among Christian schools. They were an early innovator in accelerated adult education, and have equally lead the way among Christian schools in establishing a robust online degree offerings.







The University has completed five years of construction that included four new buildings. There is little deferred maintenance, salary increases have been fairly consistent, and balanced budgets (zero-based budgeting) have been the norm. The operating budget is \$65 million and the University carries only \$20 million in capital debt. Belhaven has about 400 full-time employees and 500 adjunct faculty members.

Belhaven hosts the Arts at the highest level, recognized as one of only 36 schools in America nationally accredited in all the major Arts disciplines... and the only such school in the Council of Christian Colleges and Universities (CCCU). The University competes in 17 sports in NCAA Division III. The University has been named one of the top 43 universities to work for in America by the Chronicle of Higher Education, was honored by Best Christian Workplace; it is listed in the Top 100 Best Buy Colleges and Universities, and as one of America's Best Christian Colleges.



*They seek a new CFO and VP of Business Affairs to join their seasoned leadership team. At the same time, they will also seek to add a Controller.*

#### **ABOUT THE UNIVERSITY**

**1. Enthusiastically Christian**

Every academic program reflects a thoughtful, loving, and biblically based Christian worldview—to inform thinking, to strengthen faith, to empower calling, and to motivate service.

**2. Academically Fulfilling**

Challenging preparation equips the mind and heart to engage the world of ideas, achieve career success, and honor God through excellence.

**3. Globally Connected**

Here, the world comes to students, and students go to the world—guided by faculty who help integrate academic insights with biblical truth so students can effectively impact the world and its complex brokenness with the hope of Christ and a life of service.

**4. Supportively Caring**

Faculty, coaches, and staff support the unique learning styles, needs, and passions with mentoring relationships characterized by compassion, encouragement, understanding, and respect.

**5. Nationally Recognized**

From academic quality, to “best-buy” value, to modern campus facilities, to creative curriculum, to remarkable diversity, to a collegial faculty/staff work environment, to robust NCAA Division III athletics, to enduring Christian commitment—Belhaven University consistently ranks as “one of the best.”

**6. Dynamically Creative**

The vibrant learning community inspires students to unleash their God-given creativity—because imagination is vital to success in every profession and to embracing future challenges with hope and resolve.

**7. Technologically Advanced**

Campus smart-classrooms, advanced learning laboratories, and blazing-fast wireless Internet enhance the academic experience while students study in a dynamic state capital famous for its literature, art, sports, music, cuisine, medical research, and business opportunities, just to name a few.

**8. Surprisingly Affordable**

Competitive pricing, strong scholarships, and innovative degree design with accommodating scheduling ensure students will graduate in four years with a top-quality, private, Christ-centered education at public university prices!

*A charming campus where students are loved, challenged, and prepared.*

## HISTORY

Belhaven University is an innovative and academically progressive institution built on the timeless principles of scholarship, service, and biblical truth. Since its founding, Belhaven University has sought to fulfill the mission expressed in its motto: "to serve, not to be served."

Today's Belhaven is the culmination of three separate institutions of higher learning which merged over the years. Belhaven College, now Belhaven University, was founded in 1883 in Jackson, Mississippi as a privately-owned institution. In 1911 Belhaven was merged with McComb Female Institute, and in 1939 merged with the Mississippi Synodical College. The founding date of the latter institution, 1883, was adopted by the Board of Trustees as the official founding date of Belhaven College (now Belhaven University).



Dr. Roger Parrott became the tenth president of Belhaven in January, 1996. Under his leadership, Belhaven has added nine major buildings, a variety of new undergraduate academic majors and masters degrees, doctoral programs, intercollegiate football and other sports, campuses in Houston, Chattanooga, and Atlanta, launched an aggressive online program, developed Belhaven's Worldview Curriculum, and earned national accreditation in all four of the major Arts. The size of the student body has grown from under 1,000 students to 5,000 students, during his tenure.

Throughout his 28 years as a university president, Dr. Parrott has been deeply engaged in the leadership of the evangelical movement globally, serving in officer roles with the Lausanne Committee for World Evangelization, Mission AmericaCoalition, and other ministries designed to encourage the Church to work in cooperation. He served as chair of the 2004 Forum for World Evangelization sponsored by Lausanne and WEA. And because of his deep commitment to higher education, he has also served terms on most of the primary leadership boards of private higher education.





### ***Global Focus***

Belhaven University is not a “church related university” but a “university of the Church.” Their role is to fulfill the Great Commission, to “go and make disciples of all nations.” “Internationalization” is not a higher education trend, but it is central to the way Belhaven views the world and serves in the name of Christ.

Anchored by the new Dr. Billy Kim International Center, Belhaven helps students see, think and act internationally through components of the curriculum, cross educational and ministry cultural experiences, missions clubs and missions focused chapels, partnerships with major international ministries such as Operation Mobilization, The Lausanne Movement, Far East Broadcasting and a purposeful commitment to recruit Belhaven students from a wide variety of nations.



### ***Recognized Excellence***

Belhaven University’s academic quality and success are acknowledged by many top organizations in the country including:

- U.S. News & World Report Best Online Education Programs - *Ranked 32nd in the Nation.*
- America’s 100 Best College Buys.
- The Chronicle of Higher Education Great College to Work For.
- America’s Best Christian Colleges.
- U.S. News & World Report - *Top Regional University in the South.*

## POSITION DESCRIPTION

The CFO and Vice President for Business Affairs is responsible for all finance and business functions of the University including:

- Financial operations and controls.
- Budgeting and strategic financial planning.
- Information Technology (Belhaven uses a versatile ERP, Colleague by Ellucian).
- Student financial services including billing and collections.
- Human resources and payroll.
- Student financial aid.
- Banking and vendor relationships.
- Internal and external auditing.
- Bookstore operation.
- Legal activities.
- Risk management.

## RESPONSIBILITIES

- The CFO will be a financial leader and proactively recommend strategies to the President and relevant members of the Board of Trustees that will build the financial strength of the University in the long term, and mitigate, in the short to medium term, potential negative economic influences.
- The CFO will provide oversight for accounting, internal and external financial reporting and compliance; debt and cash management; as well as accounting and audit oversight for university assets. The CFO may also appoint a new Controller to assist in their duties. **Note:** due to the size of the institution, the CFO will often have more “hands on” responsibilities than in larger organizations.
- The CFO will perform financial analysis of the business administration, as well as funding plans for all campus building and capital projects.
- The CFO will lead a team of approximately 20 staff in the business office (which includes accounting and finance), and campus bookstore and purchasing services areas as well as manage two significant vendor relationships in the auxiliary services area.



## QUALIFICATIONS

- Candidates must have a calling in their life to Christian higher education and the mission of Belhaven University. They should be mature in their evangelical faith and balanced in their personal life.
- An advanced degree (with an MBA in finance and/or accounting preferred) or CPA certification is required.
- At least 10 years of finance leadership experience in higher education is required with a strong preference given to candidates with experience in private higher education. The ideal candidate will have 10+ years to give to the role.
- Candidates should have demonstrated leadership managing finance and related functions in a complex organization and significant experience in providing analytic and financial expertise supporting the organization's ability to achieve its strategies and produce bottom line results.
- In addition to being a unit leader, candidates must have the ability to be a full business partner to the President and Administration Team, proactively providing meaningful input on a broad range of issues to improve the performance of the University.
- Candidates must have the ability to frame decisions in a holistic manner and articulate them to other leaders for discussion. A demonstrated understanding of business operations, including zero-based budgeting as well as management of information technology is required.
- Candidates must have a proficient knowledge of generally accepted accounting principles and tax issues for private educational settings.
- Experience managing multiple campuses and on-line programs would be ideal.

## PERSONAL QUALITIES

*Successful candidates will be:*

- Highly skilled in building strong collaborative relationships across a large organization.
- Able to inspire trust through high personal integrity; an ability to maintain confidences in sensitive financial and personnel matters. Humble, transparent; no big ego.
- Strong oral and written communicators.
- Highly accurate and attentive to detail, trustworthy and credible.
- Diligent work ethic, yet maintaining good life balance.
- Strong problem-solver.
- Process-oriented; able to weigh competing agendas and priorities and make decisions that are good for the whole organization.
- Able to demonstrate ample and current evidence of discipleship of Jesus Christ and participation in a local church.
- Able to demonstrate experience and effectiveness with diversity in terms of gender, race, culture and theology; be grace centered, with an even and optimistic temperament.
- Open and personally approachable, empathetic and caring to others, a good mentor.



## OPPORTUNITY

Becoming a senior level leader with Belhaven University means joining a vibrant community of faculty and staff; all committed to helping students grow through the integration of Christian faith with learning. Belhaven University is committed to building an employee community that reflects the variety of the world and strongly encourages applications from candidates who will enhance the gender, ethnic and cultural diversity of its team of educators. The position of Chief Financial Officer carries an attractive salary along with excellent benefits.

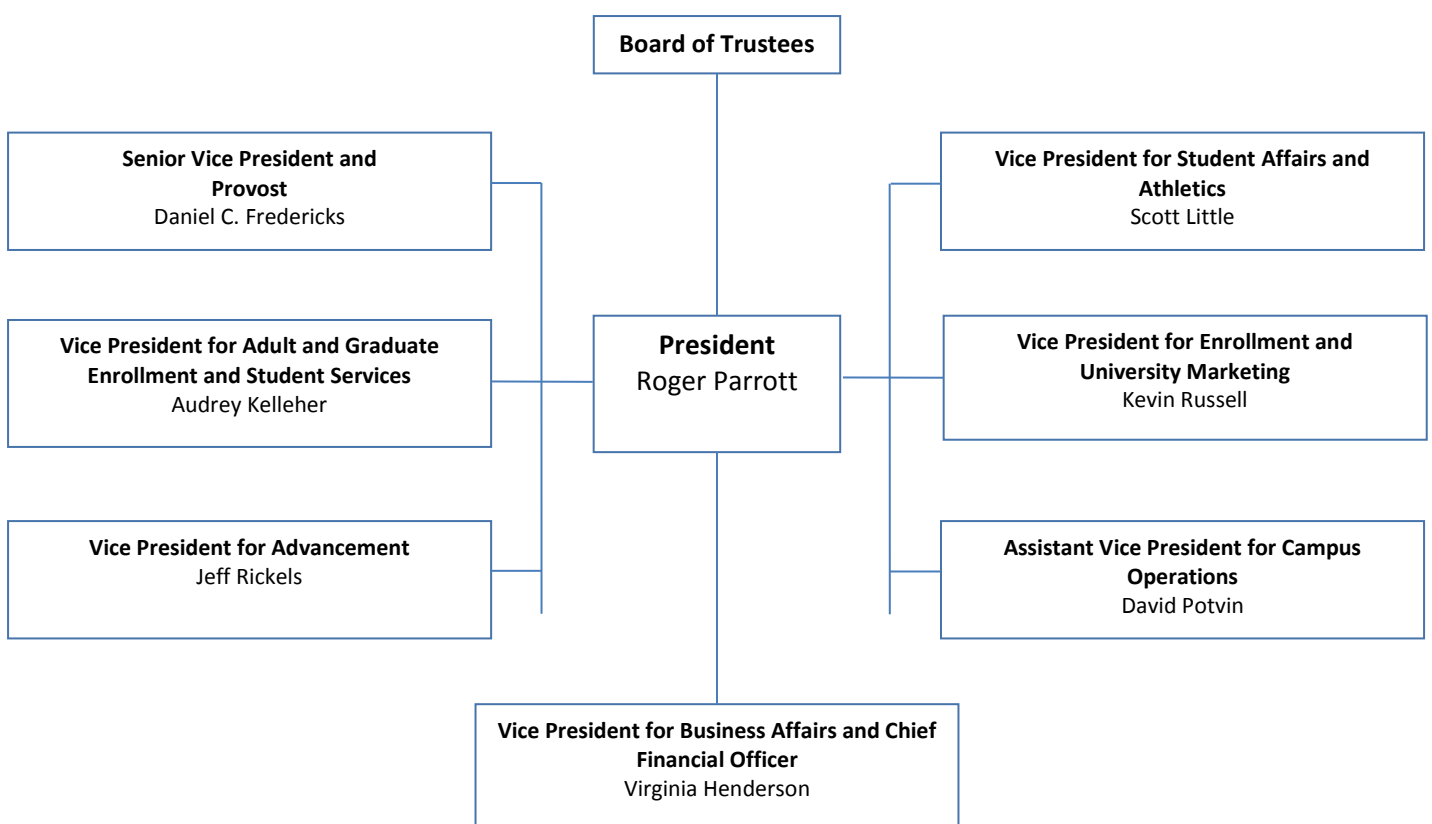
All applicants should recognize that Belhaven University is a distinctly Christian institution related to the Presbyterian Church, and will agree with, and personally embrace the attached Mission Statement, Statement of Faith, and Christian Aims and Standards. (*See Appendix A*)



## ORGANIZATIONAL STRUCTURE

The position reports to the President, Roger Parrott, Ph.D. and is a member of the Administrative Team, including: Provost, VP for Student Affairs and Athletics, VP for Development, VP for Adult and Graduate Admissions and Student Services, and VP for Enrollment and Marketing. The VP for Business Affairs has direct reports that include The Director of Financial Aid, Controller, Bookstore Manager, Director of Information Technology and Director of Human Resources. An Assistant Vice President for Campus Operations also reports to the President in his leadership of maintenance, security, housekeeping, and construction, but does not meet regularly with the Administrative Team.

The CFO serves as the lead ex-officio member of the Finance and Administration Committee as well as the Audit Committee of the Board of Trustees. The CFO partners with other key leaders inside and outside of the University in building financial systems that optimize its resources to support the University's mission and strategic opportunities. Clearly, this position is vital to the future of Belhaven University in its multi-faceted mission.



## **JACKSON, MISSISSIPPI AREA**

Belhaven University has enormous reach and goodwill in the Jackson area, which allows the University access to political, business, education, and cultural decision-makers. For senior level employees and faculty, the University is generous in extending their influence to help in job searches for spouses, banking relationships, medical expertise, and other connections that would not normally be accessible to new residents of the community.

The University is located in a charming historic neighborhood within blocks of the major medical facilities, only a five minute drive to downtown.

Jackson, the capital city of Mississippi is “The Heart of the New South.” The Greater Jackson area has a population of 576,800, and serves as a major hub of the south, with Jackson International Airport only 15 minutes from Belhaven’s campus. It is a two-and-a-half-hour drive to New Orleans, three hours to Memphis, and four hours to some of the most beautiful beaches in America, and five hours to Dallas or Atlanta.



***The City of Jackson*** has been recognized in recent years by the following regional and national media outlets, publications and organizations: Top 10 U.S. Cities to Start Your New Business, One of the Ten Best Places to Retire in America for Under \$40,000 – U.S. News

and World Report One of the Nation’s 100 Best Communities for Young People – America’s Promise Alliance, and many others.

Jackson has a strong service industry that supports the primary economic drivers: government, education, healthcare, technology and entertainment. Other universities and colleges in Jackson include: historically black Jackson State University (10,000), the University of Mississippi Medical Center of Ole Miss, private Christian Mississippi College in nearby Clinton (5,000), private liberal Arts institution Millsaps College (800), and Reformed Theological Seminary (2,600). The majority of small businesses in Jackson and the metro area are wholesale trade, retail trade, professional services, and accommodation and food services. The city is a major medical resource for the region with the highest level of care offered through Baptist Health Systems, St. Dominic Health Services, University of Mississippi Medical Center, VA Hospital and the Jackson Medical Mall. Overall, a strong local economy provides lower than average cost of living with (75% of the national average) with all the amenities of a much larger metropolitan area.



### ***The Cultural Scene***

The city pulses with music from classical to inspirational, home-grown gospel, blues, jazz, rock 'n roll, R&B and more that can be found all around town. Beautifully changing seasons offer numerous fall and holiday events rich with tradition. Jackson is home to more historical markers celebrating blues heritage than anywhere else in the state. You can find live music all over the city. Jackson is a mecca for artists to express themselves. Legendary authors like Eudora Welty (lived across the street from Belhaven), Richard Wright and Margaret Walker Alexander called Jackson home. Acclaimed author Elizabeth Spensor is an alumne. The city is home to a lively local culinary scene, and is a great destination for a relaxed getaway to explore 27 unique museums and attractions, over 300 restaurants, hundreds of fun events and festivals, three historic cultural districts, and innumerable visual and performing Arts. Jackson, the “Crossroads of the South” offers much to be desired in quality of life.

Working at the highest level of collegiate Arts, Belhaven University offers over 100 performances annually, and an equal number of athletic events – all of which are free for employees and their families.

### **EDUCATIONAL BENEFITS**

While it is common for CCCU schools to offer the children of their faculty, staff and administrators tuition remission for undergraduate degrees, Belhaven goes several steps further. Belhaven offers spouses and children of their employees undergraduate tuition remission as well as a residence hall housing. Employees are also eligible for master degree tuition remission. It's also possible for children of the employee to get the tuition remission at other CCCU schools, and a consortium of Presbyterian Universities and other affiliate groups for undergraduate degrees in an exchange program.

### **THE SEARCH AND SELECTION PROCESS**

Dr. Parrott will select the new CFO with input from board members and other members of the Administrative Committee. Dr. Parrott is assisted by Bruce Dingman and Rich Kidd of The Dingman Company ([www.dingman.com](http://www.dingman.com)) an executive search firm, which has a successful track record for similar searches.

With input from Dr. Parrott, this document was created and then sent to people who might be potential candidates or who might suggest potential candidates. From the people being contacted with this Opportunity Profile, many names will be considered. The Dingman Company will consider each name suggested or applicant and will interview the strongest candidates through personal interviews and then confidentially check their references. All candidates will go through this process.



The list of candidates will be reduced to probably four people who will then be comprehensively interviewed by Dr. Parrott and others in late March or early April. Following this, one will likely be recommended by Dr. Parrott for affirmation by board members. Maintaining candidates' confidentiality will remain an important part of the process up to this point.

## SUMMARY

This is an opportunity for someone with excellence in technical skills, knowledge, people skills and strong desire to serve the Lord in an environment committed to helping students grow in knowledge, faith and maturity as they ready themselves for making a difference for Christ in the world. This person will have senior level finance/accounting experience with a private university, college or seminary.

We fully respect the need for confidentiality of information supplied by interested parties and assure them that their backgrounds and interests will not be discussed with anyone, including our client, without their prior consent, nor will reference contacts be made until mutual interest has been established. As part of the process of being a candidate, the person will authorize a background check for driving, history, credit, social media, degree verification and criminal records.



Our client is an equal opportunity employer and does not discriminate on the basis of race, age, color, sex, national origin, or physical handicap. As a religious non-profit organization, Belhaven University will make decisions on the basis of theological faith, as will The Dingman Company as Belhaven University's agent. This document can be viewed or printed from [www.Dingman.com/Belhaven.html](http://www.Dingman.com/Belhaven.html).



*The Dingman Company, Inc. is a retained executive search firm devoted exclusively to serving our clients in matters of executive selection. We are a generalist firm that for 30+ years served the business and non-profit worlds nationwide, including many within in the Christian community.*



For further information on this position, please contact:

Bruce Dingman  
[bruce@dingman.com](mailto:bruce@dingman.com)

818 378-7755

or

Dr. Rich Kidd  
[rich@dingman.com](mailto:rich@dingman.com)

757 642-0622

## APPENDIX A

### BELHAVEN UNIVERSITY FACULTY AND STAFF COMMITMENT

As Faculty and Staff members we recognize that Belhaven University is a distinctly Christ-centered institution related to the Presbyterian Church, and agree with, and we each personally embrace the Mission Statement, Statement of Faith, and Christian Aims and Standards. We agree that by our work and example, both on and off campus, we will demonstrate these ideals as they are articulated in these documents.

### MISSION STATEMENT

Belhaven University prepares students academically and spiritually to serve Christ Jesus in their careers, in human relationships, and in the world of ideas.

Belhaven University affirms the Lordship of Christ over all aspects of life, acknowledges the Bible as the foundational authority for the development of a personal worldview, and recognizes each individual's career as a calling from God. Each academic department is committed to high academic goals for its students and clarifies the implications of biblical truth for its discipline. Belhaven upholds these commitments in offering undergraduate and graduate programs, by conventional and technological delivery modes, and in local, national, and international venues. The University requires a liberal Arts foundation in each undergraduate degree program in order to best prepare students to contribute to a diverse, complex and fast-changing world.

By developing servant leaders who value integrity, compassion, and justice in all aspects of their lives, the University prepares people to serve, not to be served.





## INTERPRETATION OF THE MISSION

Belhaven University intends to be distinctively Christian. It is this feature that distinguishes Belhaven University from other public or private institution of higher learning. As do other Christian liberal Arts colleges, Belhaven emphasizes the importance of integrating Christian faith and scholarly learning. But at Belhaven the issue is pushed one step farther. How does Christian faith impact life in the career paths, family relationships, and community settings into which students are headed? Challenging students to answer this question and to wrestle with the issues it touches lies at the heart of Belhaven's distinctive mission.

Fundamental to this purpose is the effort to fashion in students a Christian world-and-life view. Through a diversified curriculum and a carefully chosen faculty, the University's program of instruction nurtures the understanding that there is perfect harmony between the things of God, who is the source of all truth, and the world of science and nature as it is encountered in the classroom and in life. The program is governed by the conviction that there is no final conflict between the truth of God and the facts of life in the things He has created and ordained. An education based on this approach not only moves the student deeper into the body of knowledge accumulated by our civilization but gives genuine wisdom for interpreting such knowledge. It produces an appreciation for values that provide a basis for decision-making. Biblical principles woven into the fabric of the instruction find application among all the decisions of life. They equip the student with a reliable basis for making choices, setting priorities and living a happy, useful and fruitful life.

An emphasis upon such principles and values is in no way separated from an emphasis on good scholarship. Excellence in scholarship is required of each teacher and is sought, as a goal, from each student. At Belhaven, scholars are commissioned to do two things: to tap the rich resources of the liberal Arts tradition and to facilitate experience-based learning.

The University emphasizes the importance of a practical education that equips a person for specific job and career goals. Programs such as "internships" sharpen both skills and perspectives by placing students in contexts and roles that give relevance to classroom instruction. Programs such as "mentoring" provide continuing contact with people who daily translate academic issues into life patterns.

At Belhaven, this practical education is cast within a strong liberal Arts frame of reference. The University is determined to provide a liberal Arts education that fashions and prepares the whole person for well-rounded, responsible leadership in a complex and fast-changing world. The development of essential skills for critical thinking and communication, the study of human life and experience, and the cultivation of an appreciation for the dignity and creativity of the world's people receive priority attention because the University believes that it is a liberal Arts education which best prepares people for profitable service in the work place and for a wider range of possible vocational options and career paths.

Belhaven is committed to the Lordship of Christ in its academic program, its administration, and its campus life. It does not require every student to embrace personal Christian faith but offers to all an education and environment based on such faith. The University cares for the whole person as one made in the image of God and capable of growth in mind and spirit. The faculty and staff give individual

attention to each student by offering counsel regarding personal development, academic performance, and career and vocational choices. The University provides a holistic learning environment in which each student can develop emotionally and physically within a Christian context. It is the goal of the University that its graduates would make effective and responsible contributions in their vocational roles and would embody in their lives the Christian ideals of the University.

Belhaven is guided by an independent Board of Trustees composed of men and women of evangelical Reformed faith. While the University was established and owned in its early history by the Presbyterian Church and continues to maintain close ties of common commitment with the Presbyterian Churches from which it has come, the current Board is drawn from different denominations and the University welcomes students from all churches and from all racial, ethnic and religious backgrounds. The administration, faculty, and staff have been carefully selected for their ability to perform and communicate in their chosen fields and for their commitment to the University's Christian purposes. Belhaven's motto is expressed in the words and example of Christ: "To Serve, Not to Be Served." It is the mission of Belhaven to produce graduates who embody this principle in all aspects of life.



## **STATEMENT OF FAITH**

We believe that there is only one God, eternally existent in three persons: Father, Son, and Holy Spirit.

We believe in the deity of our Lord Jesus Christ, in His virgin birth, in His sinless life, in His miracles, in His vicarious and atoning death through His shed blood, in His bodily resurrection, in His ascension to the right hand of the Father, and in His personal return in power and glory.

We believe the Bible to be the inspired, inerrant, and only infallible, authoritative Word of God, which exercises ultimate authority over the individual, the Church, and human reason.

We believe that justification through Christ is received by repentant sinners through faith alone, without works. We believe that God, by His Spirit, progressively transforms the lives of those who are justified by God.

We believe in the resurrection of both the saved and the lost; they that are saved unto the resurrection of life and they that are lost unto the resurrection of damnation.

## **CHRISTIAN AIMS AND STANDARDS**

Belhaven University is an evangelical coeducational college of liberal Arts of the Presbyterian Church. From this relationship to the Church the University draws its philosophy of education and purpose. Believing that an appreciation of spiritual values is a part of our proper understanding of ourselves and the world in which we live, the University emphasizes the Christian principle in its curriculum of liberal Arts and sciences and in its varied activities in order to assist students in living responsible and satisfying lives regardless of the vocations they may follow.

Belhaven is a small university that prides itself on a personal relationship between students and faculty which permits individual interest and devotion, individual guidance, individual instruction, and judicious counsel.

It is our aim to provide for each individual student the best possible educational and cultural advantages under a positive religious influence. It is our aim to develop in each student a mature sense of social obligation and true intellectual and spiritual values. We are committed, under God, to the development of intellectual and moral citizens of the state and an educated God-fearing leadership for the church. An enlightened intelligence, moral strength, and spiritual vision for each individual student is our objective.

We believe in the fundamental teachings of Evangelical Christianity, and accept the Bible as the Word of God, the only infallible rule of faith and practice. With that foundational understanding, Belhaven University desires that we each grow positively in our relationship with God rather than focusing our faith on a listing of behavior rules.

However, a carefully prescribed set of agreed expectations help us best live our faith in community together. Faculty and Staff agree to live by the same behavior standards expected of students:



Alcohol - Students or guests may not sell, possess, or consume alcoholic beverages on the campus, on the premises of any organization granted recognition by Belhaven, or at any University-related event. (Possession is defined as being in the immediate area, room, vehicle, house, on one's person, etc.) This includes athletic, music, or recreational events, on or off campus. Possession of empty containers on the campus is considered possession of alcohol. When law allows for the consumption of alcohol, students are expected to exhibit the highest standards of Christian principles and behavior at all times. Regardless of law, Belhaven or its employees (staff or faculty) will not purchase or otherwise provide alcohol for students at any time, nor host any formal or informal event with students where alcohol is present.

Cohabitation - Being a Christian institution, Belhaven upholds biblical guidelines concerning human sexuality. All relationships and conduct should reflect that of Christian character. The University upholds the institution of marriage between members of the opposite sex as the proper relationship for the sharing of sexual activities. Therefore, any sexual conduct not within these biblical guidelines is prohibited. Additionally, unrelated members of the opposite sex are not to cohabitate.

Discrimination - The intentional public discrimination against a person on the basis of disability, age, sex, creed, political persuasion, race, nationality, or color is forbidden.

Firearms - Weapons are not allowed on the campus at any time. This includes any type of firearm, weapon, dangerous chemical, or any explosive device of any description, including compressed air-guns, pellet guns, BB guns, bows and arrows, or illegal knives. Pocket knives with blades longer than three inches are not allowed on campus. (Possession is defined as being in the immediate area, room, vehicle, on one's person, etc.).

Tobacco - In the interest of promoting a healthy living environment for all of the University community, the use of tobacco in any form is prohibited on the campus, including buildings, parking lots, lawns, and sidewalks, as well as at all University sponsored events. Prohibited products include, but are not limited to cigarettes, cigars, chewing tobacco, snuff, and pipe tobacco.



The ideals of Belhaven University are effectively expressed in the words inscribed on the University seal, "To Serve, Not to Be Served."